

# Setting up Dasylab for Goldammer Measurement Devices

## Requirements:

Download and extract the Dasylab DLP package to your computer. The package contains several dlp files for different Dasylab versions.

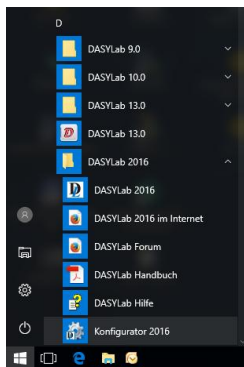
Dasylab 13.x

*multichoice-xxx-xxx.13.0.0.0.dlp*

Dasylab 14.x (Dasylab 2016)

*multichoice-xxx-xxx.14.0.0.0.dlp*

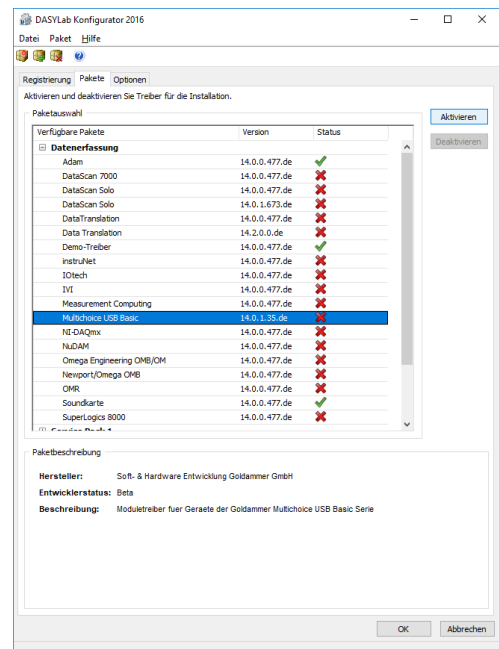
## Configurator:

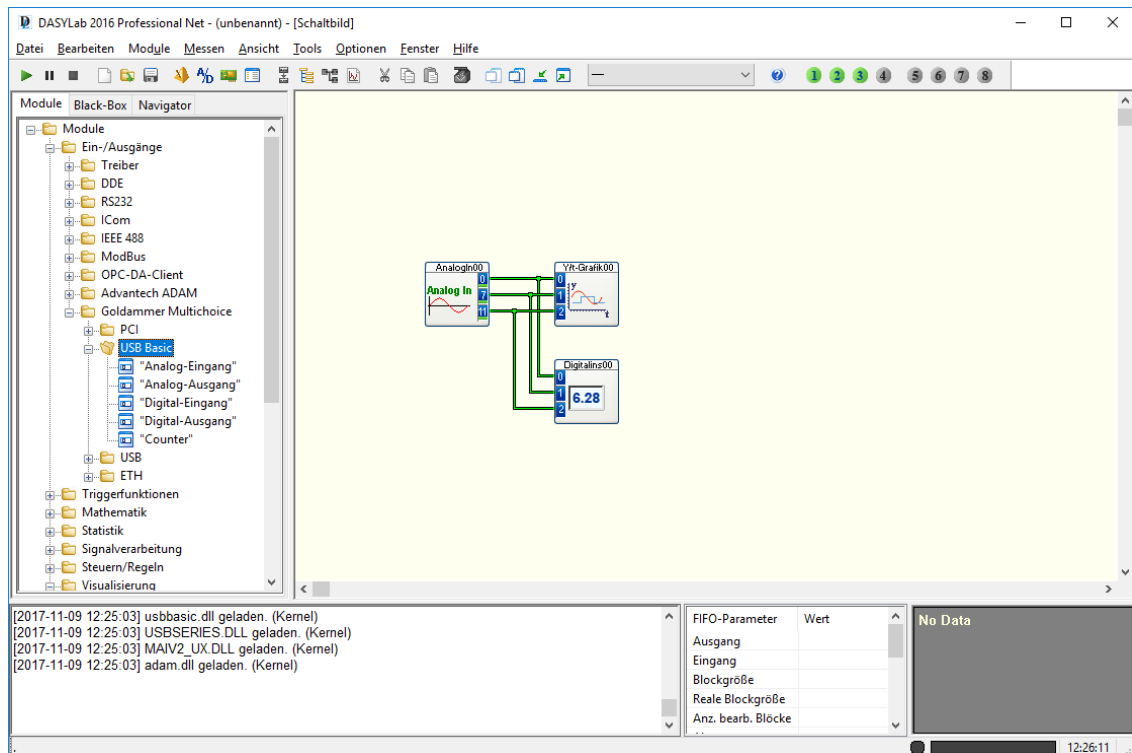


To using the driver modul in Dasylab, you will be activate the package in Dasylab configurator. Starting this tool by selecting it via windows start menu.

Add the driver package by select "Import Package" function in "Package" menu. Then click the "Packages" tab and select or unselect one of the "Multichoice xxx" driver moduls.

The green hook indicate active packages.





Now, you can use the modul driver components in your DasyLab sheet!